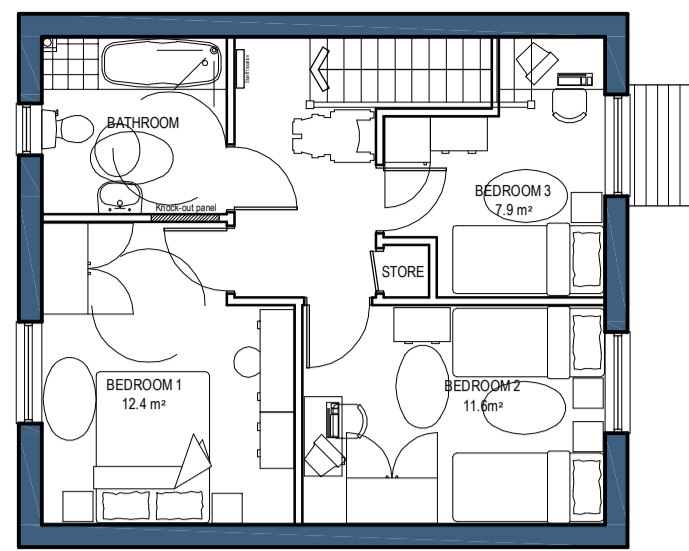
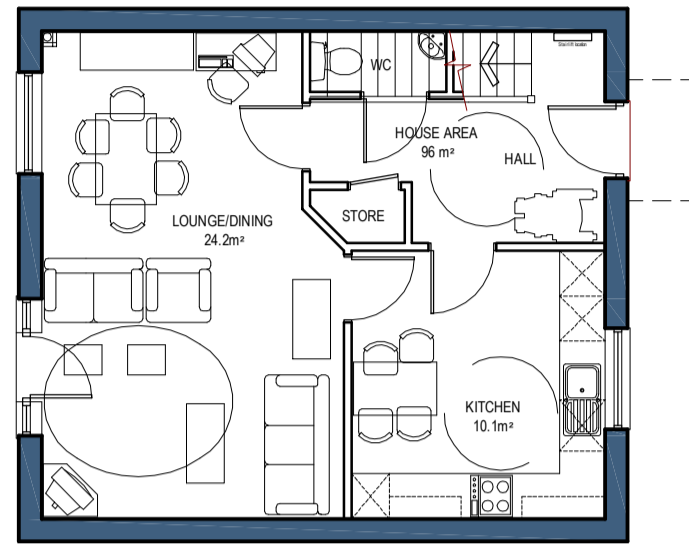


2 BED 3 PERSON
STANDARD BUNGALOW

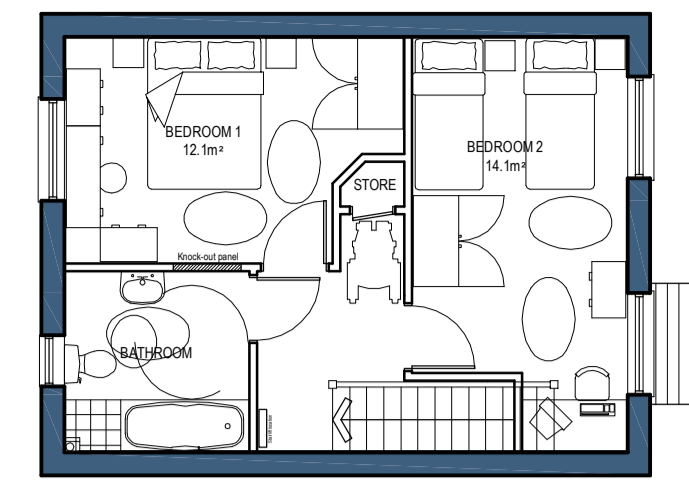


FIRST FLOOR

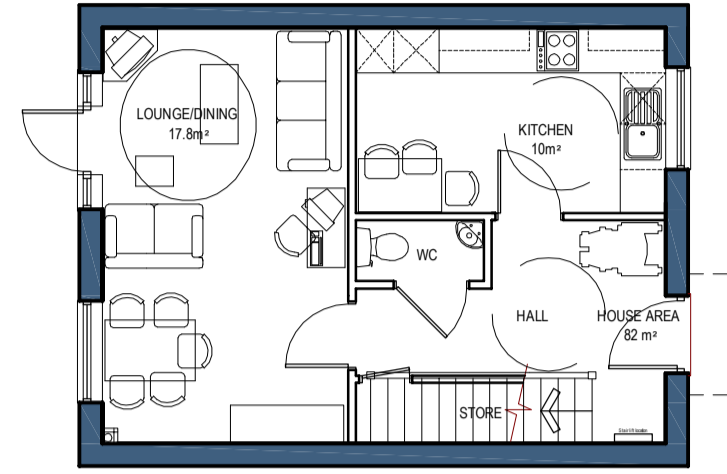


GROUND FLOOR

3 BED 5 PERSON
DPU HOUSE

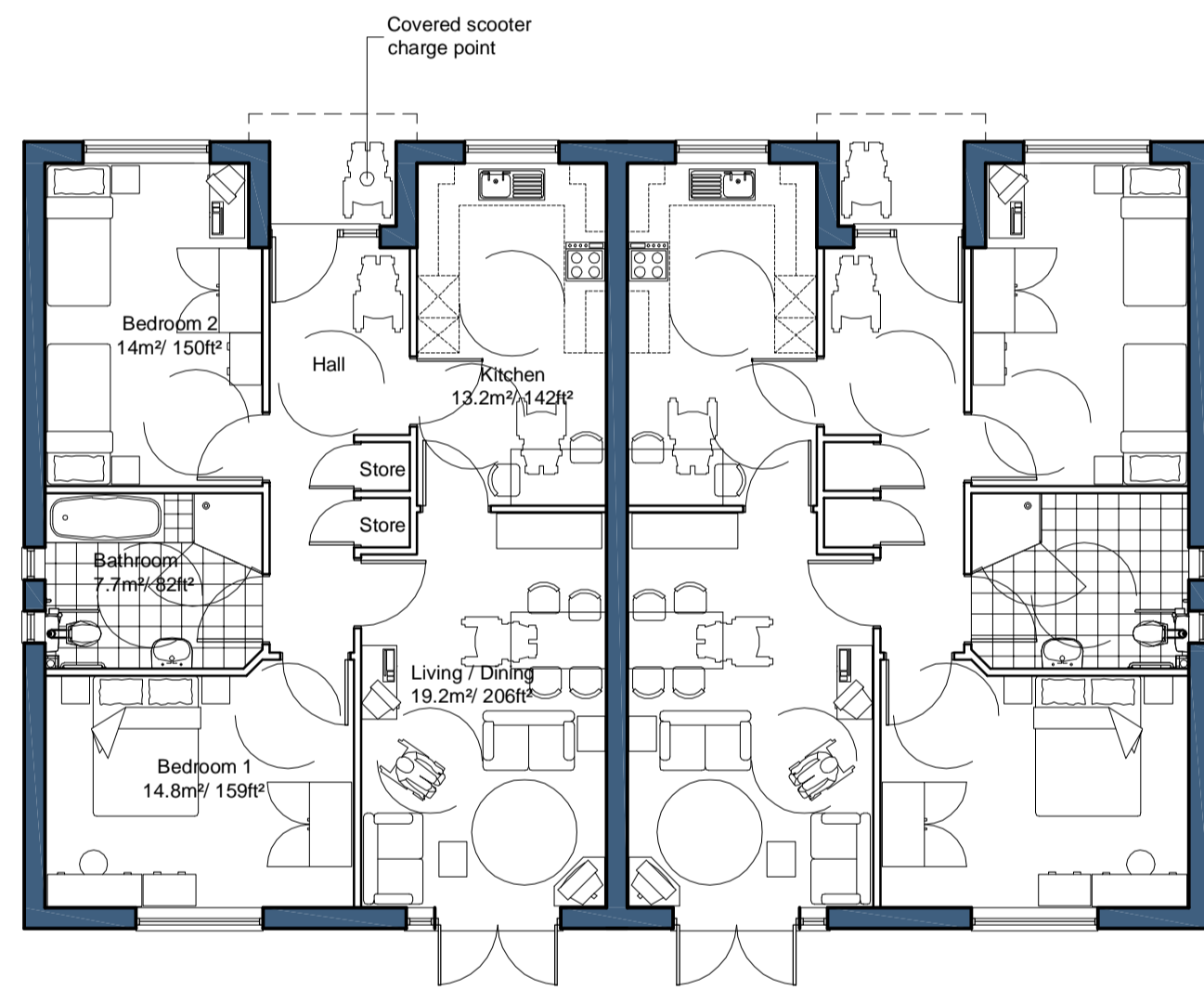


FIRST FLOOR

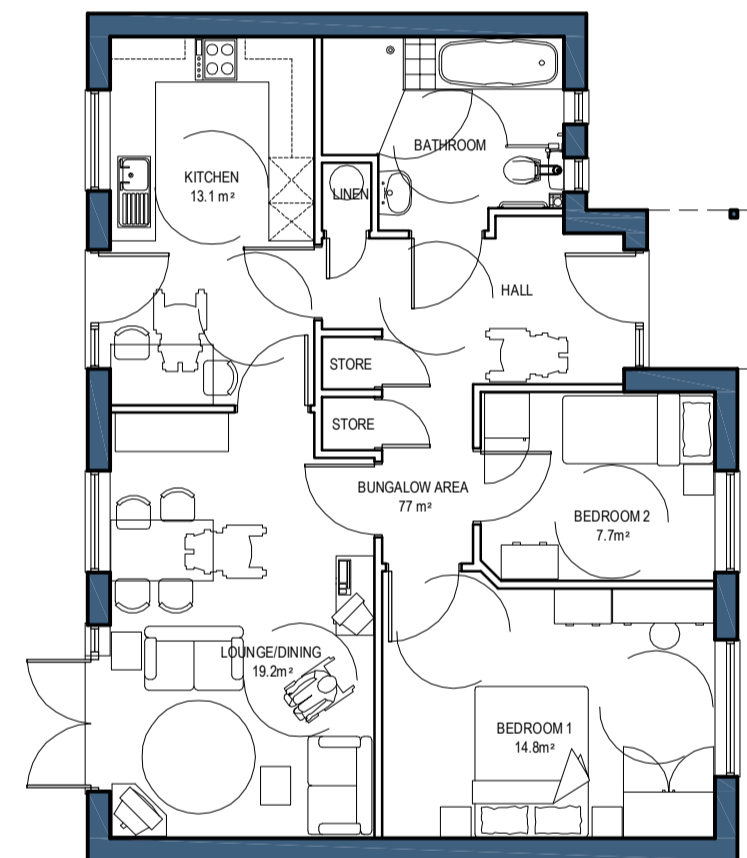


GROUND FLOOR

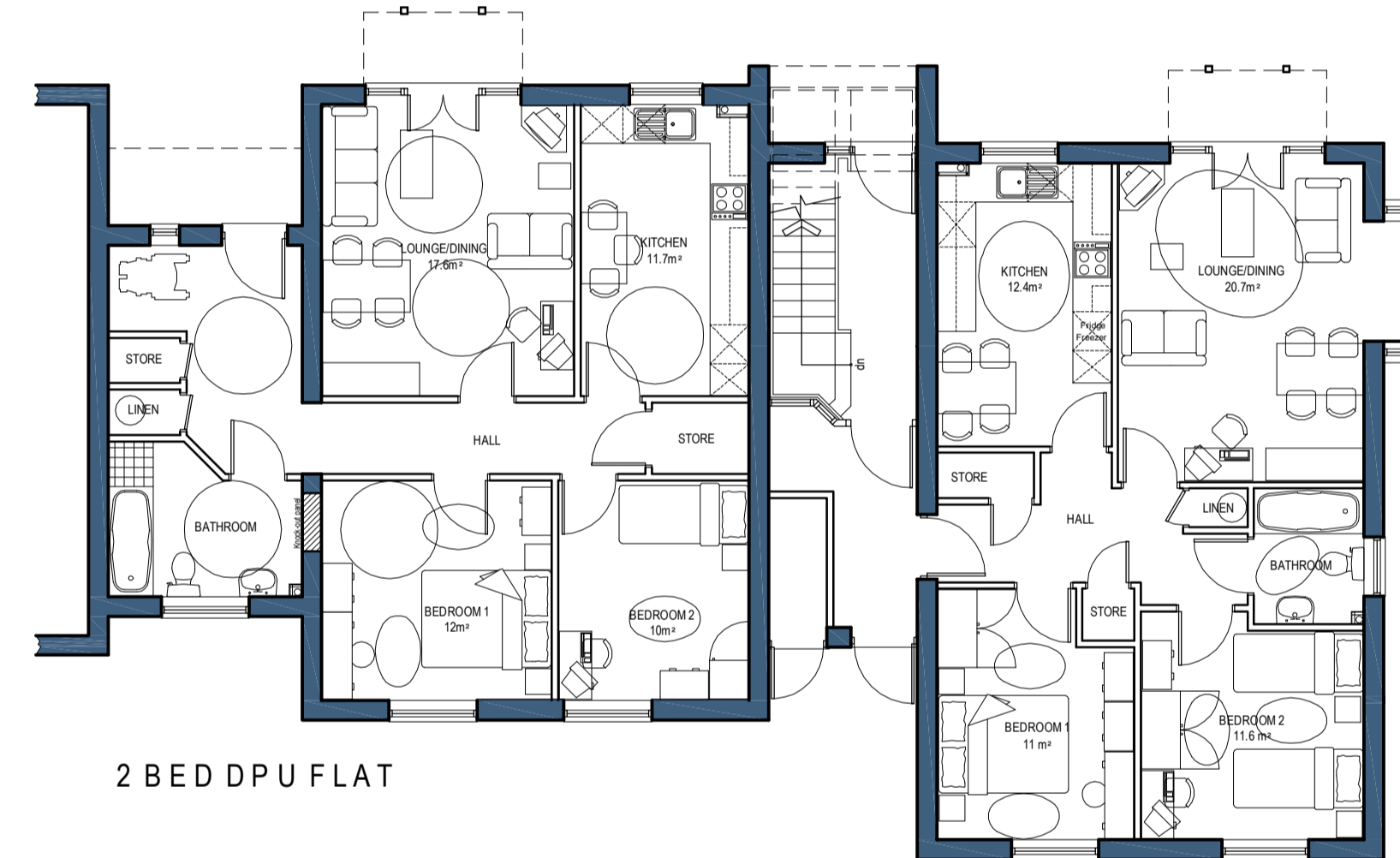
2 BED 4 PERSON
DPU HOUSE



2 BED 4 PERSON
DPU BUNGALOW

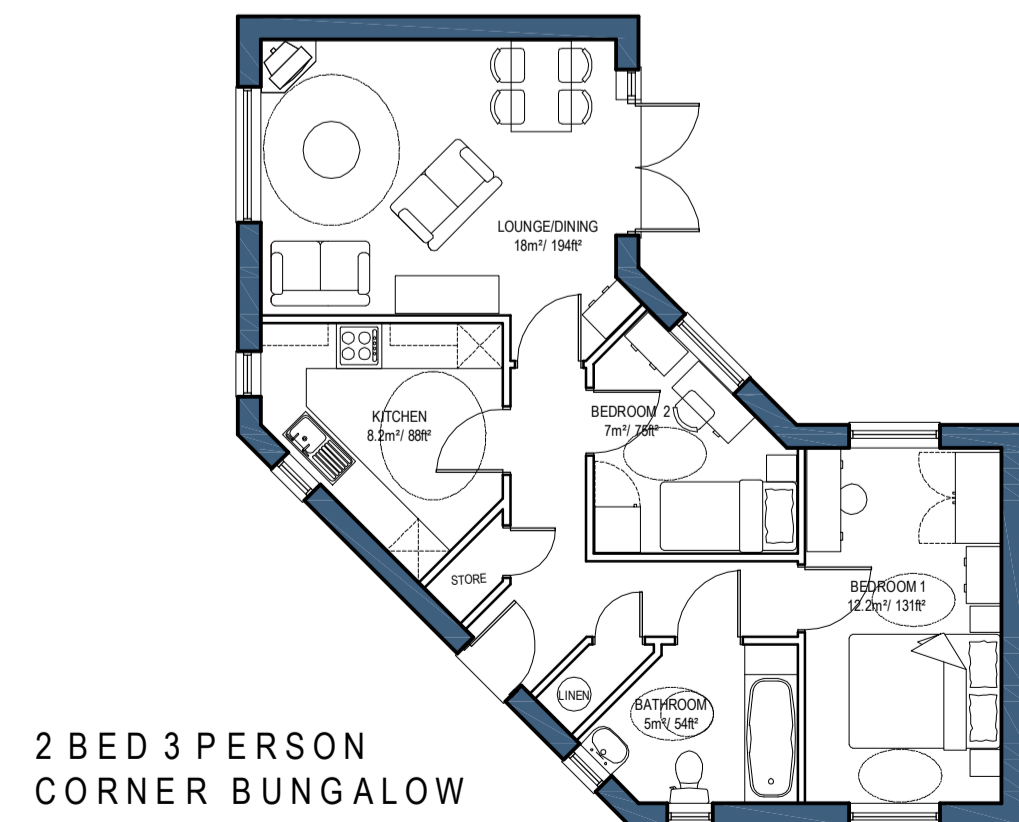


2 BED 3 PERSON
DPU BUNGALOW

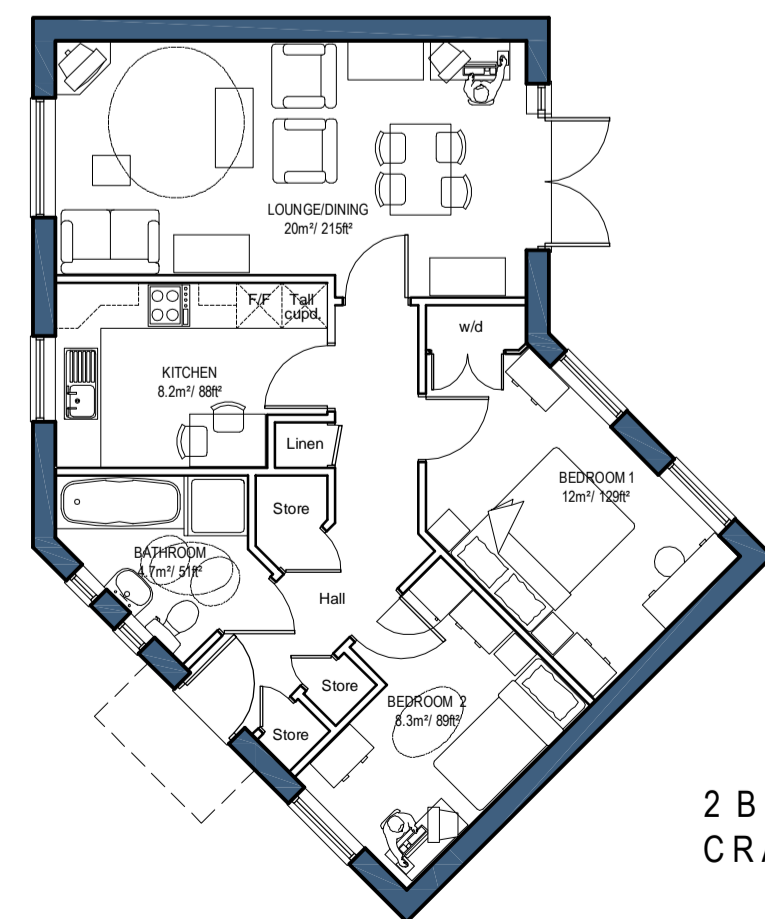


2 BED DPU FLAT

STANDARD 2 BED
4 PERSON FLAT



2 BED 3 PERSON
CORNER BUNGALOW



2 BED 3 PERSON
CRANKED BUNGALOW

Lifetime Homes Standards:

- Where applicable and achievable, all units are designed to Lifetime Homes Standards, including the following -
- Bathrooms with side access to WC and Bath.*
- Provision for future stair lift (to houses).*
- Low window cills to living room.*
- Walls able to take adaptation.*
- Living or family room at entrance floor level (to houses).*
- Distance from car parking space kept to a minimum.*
- Knock-out panel or hoist route from master bedroom to bathroom.*
- Sockets, controls etc. at convenient height.*
- Accessible entrance level WC (plus shower opportunity on larger units).*
- Width of doors and hall allow wheelchair access.*
- Turning circle for wheelchair in ground floor living room.*
- Accessible threshold which is covered and lit.*
- Level or gently sloping approach to unit.*
- Parking space 3300mm or capable of widening to this width.*

DPU's (Disabled Persons Unit):

These units are designed (where applicable and achievable) to Wheelchair Housing Design Guide Standards.

(All internal unit layouts undergo further enhancements and continual improvement at detailed design stage to comply with all current and where possible future design criteria).



CONCEPT HOUSE
35 KINGSTON CRESCENT, NORTH END
PORTSMOUTH, HAMPSHIRE PO2 8AA
TELEPHONE 023 9267 3618
FACSIMILE 023 9267 9819
E-MAIL: info@kennscaddanassoc.co.uk

PROJECT
VELMORE ESTATE
CHANDLERS FORD

DRAWING TITLE
TYPICAL BUNGALOWS
AND DPU UNIT PLANS

Date	Drawn by
MAY 2008	LD
Scale	Drawing No.
1:100 @ A1	666-PD-104
	Rev.
	-